



# 5540 N 153<sup>rd</sup> Ave

## NOW \$349,750



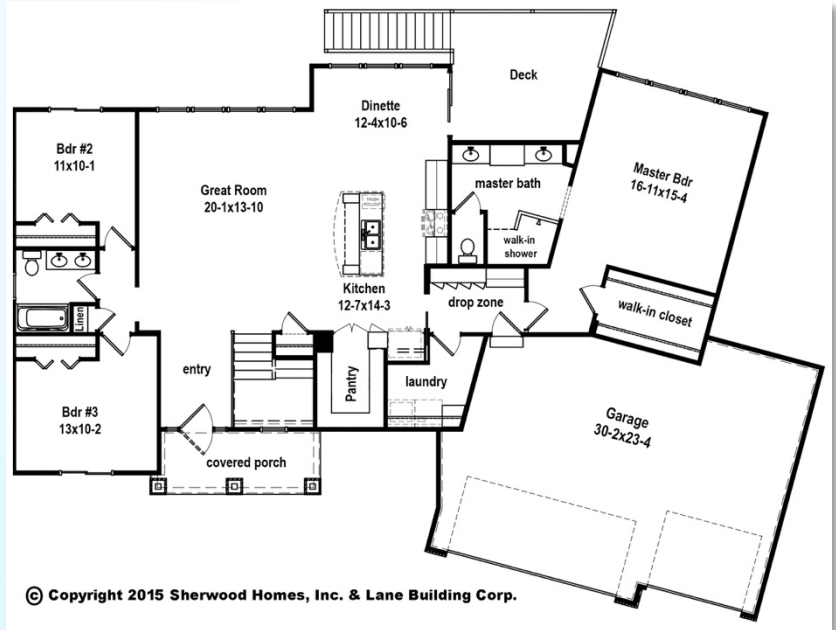
1879 square feet



**PRICED \$10,000  
BELOW COST TO  
DUPLICATE!!**

### Augusta Ranch • Castle Creek

- Large kitchen with custom Birch cabinets and granite counters • Drop Zone off garage to keep clutter out of the Kitchen • Large main floor laundry • Huge Hidden pantry in kitchen • Walk-in closets • Walk-out basement and deck • Oversized 3-Car Garage • Walk-in Ceramic Tile "Spa" shower in master bath • Unique angled design



## John & Lisa Gell

Phone/Text: **402.740.4885 (John)**

**402.850.6653 (Lisa)**

Email: **John.Gell@CBSHOME.com**

Website: **www.JohnGell.CBSHOME.com**

**www.SherwoodHomesOmaha.com**



The Gell Group CBSHome Real Estate-Omaha



GellGroup



SherwoodHomesOmaha



#GellGroup