



*Sherwood  
Homes*  
by  
Glen Palmer



**LANE**  
BUILDING CORP.

## DISCOVER THE *Lambaer*

Total 3046 Square Feet

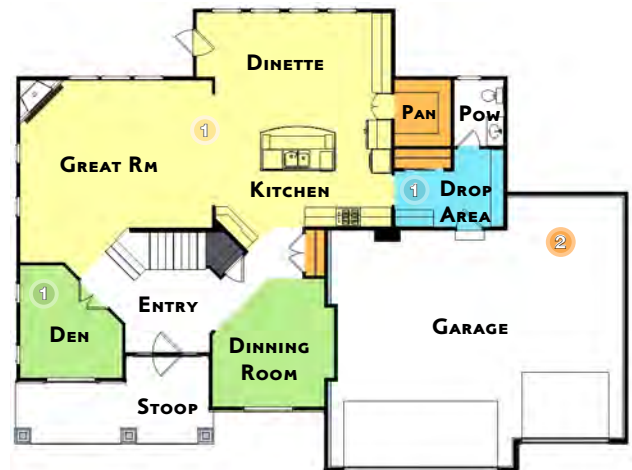


### De-Stressing

- 1 Bench with coat hooks and cabinets** make a smooth transition into the home, and a clutter-busting way to store shoes, coats and umbrellas; while offering a place for keys and cell phones too!  
**- Upper level laundry**, close to where you change, eliminates carrying up and down.
- 2 Spacious master suite, a private oasis** to retreat from outside world and enjoy peace and serenity.  
**- Boasting a large walk-in shower, two sinks and a private water closet**, the master bath provides a comforting and relaxing atmosphere.

### Entertaining

- Welcoming covered porch.**
- 1 Open kitchen/dinette/great room** is equally accommodating for formal and informal occasions. Extra space allows you to all leaves to the dinette table for large family dinners or move into the family room and enjoy the fireplace.
- Numerous uses for this spacious lower level.** How do you want your home to live? If you can imagine it, we can help you make it a reality. A family room ... game room ... home theater, or additional bedrooms. The possibilities are endless!



### Storing

- Walk-in pantry near kitchen** ensures plenty of storage for prepared foods, baking needs and small appliances.
- 1 Walk-in closet in Bedroom #1** offers a lot of hanging space and a stack of shelves, helping keep your clothes and your life organized. Be sure to ask about the available closet maximization systems.
- Linen closet in the master suite bathroom plus a hall linen outside bedroom 2** provide plenty of room for extra sheets, blankets, towels and soaps.
- 2 Roomy, 3-car garage affords extra storage.** From camping gear to garden tools and automotive supplies, you're sure to appreciate the storage afforded by this home's garage.



### Flexible Living

- 1 Numerous options for the den.** Keep it the way it is, or adapt it for use as a library or home office. Even couple it with the dining room for his and her offices.
- 2 Use Bedroom #2 for guests**, or open it clear up - and create a loft space.